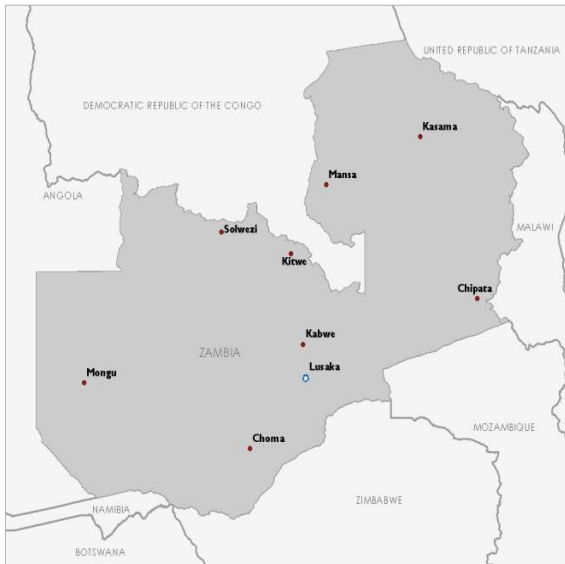
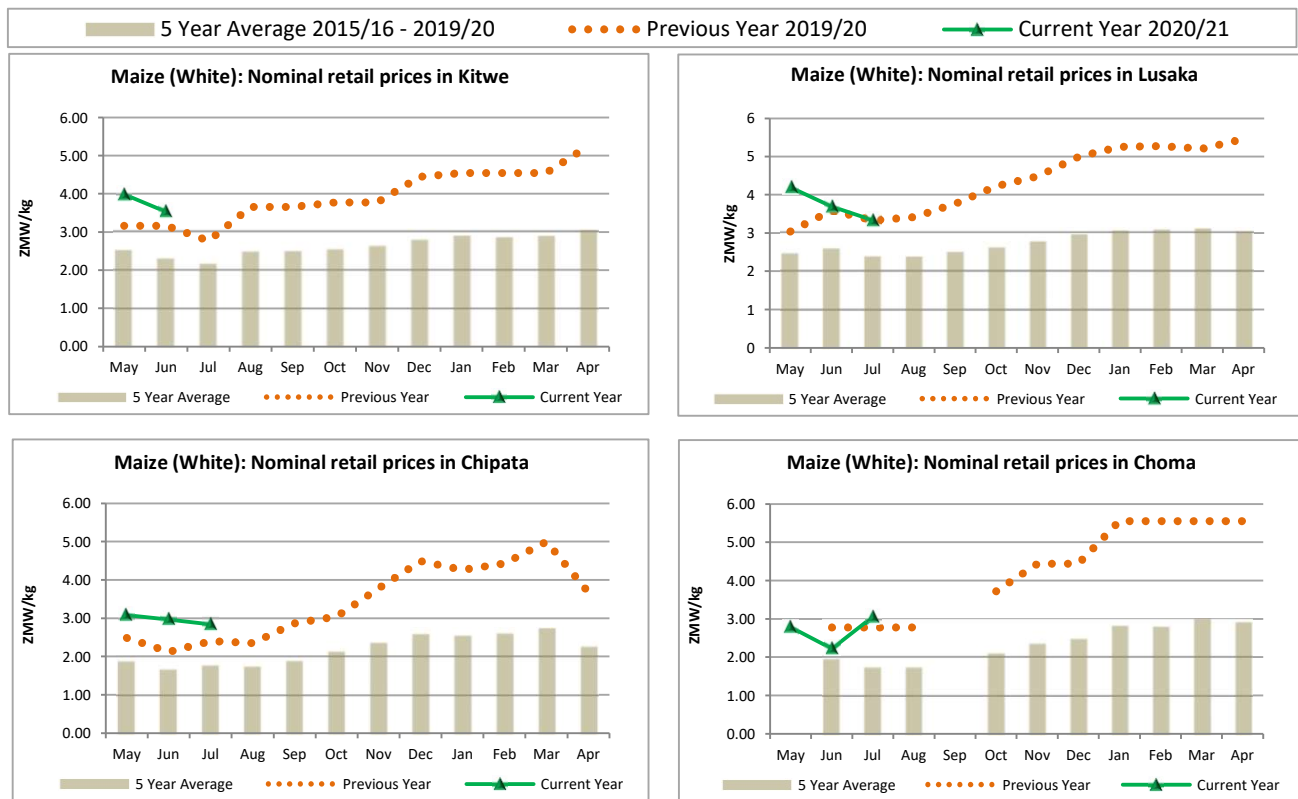


The Famine Early Warning Systems Network (FEWS NET) monitors trends in staple food prices in countries vulnerable to food insecurity. For each FEWS NET country and region, the Price Bulletin provides a set of charts showing monthly prices in the current marketing year in selected urban centers and allowing users to compare current trends with both five-year average prices, indicative of seasonal trends, and prices in the previous year.

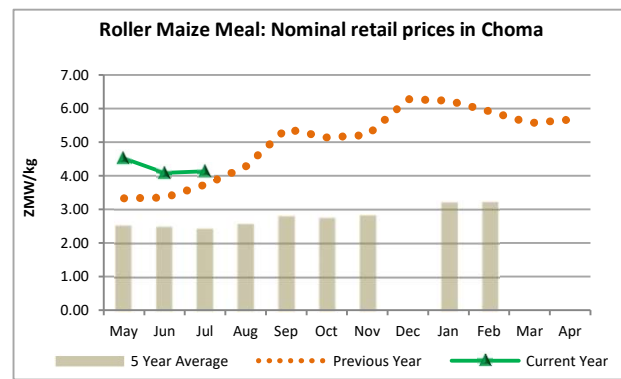
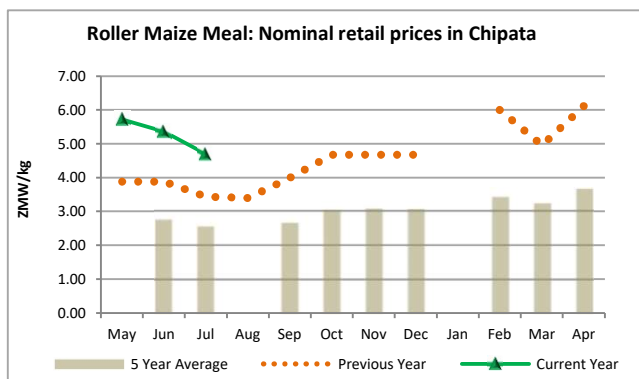
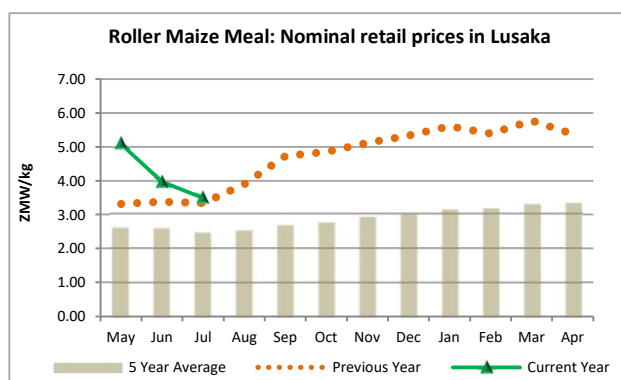
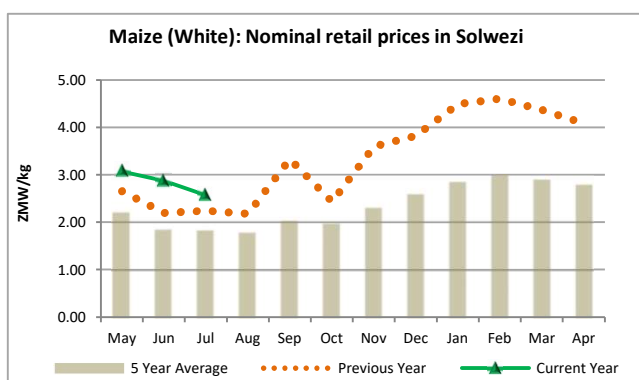
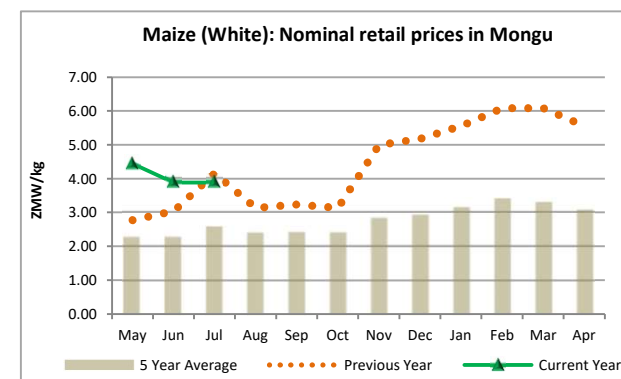
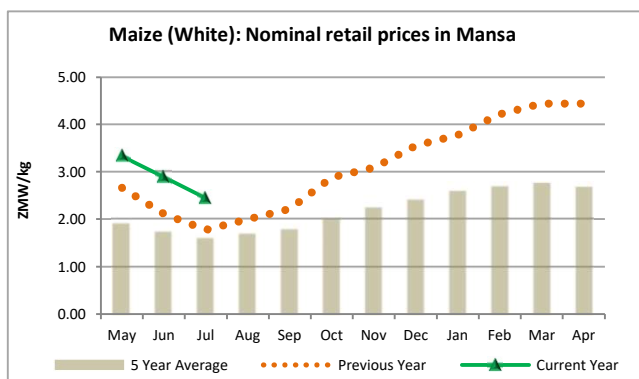
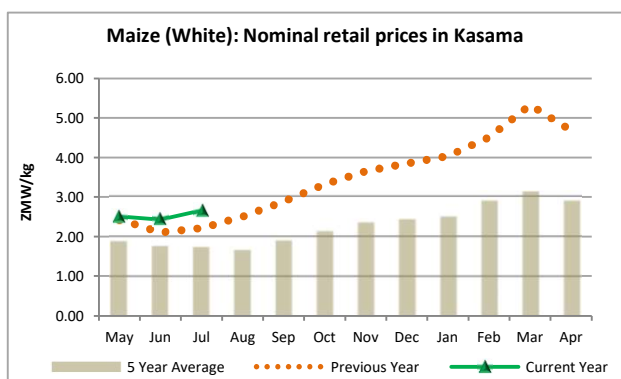
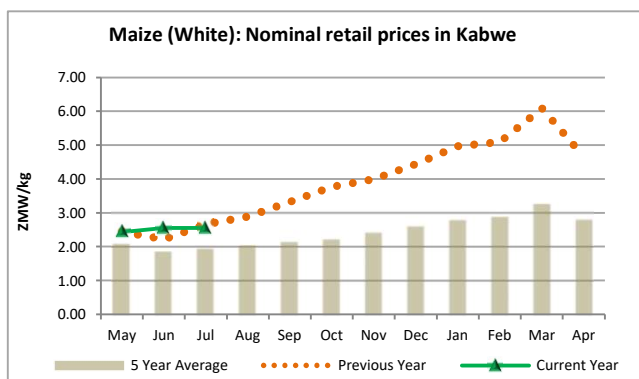


Maize grain and maize meal are the most important food commodities and indicators of food security in Zambia. All of the markets represented — with the exception of Kitwe — are in provincial centers and thus provide a geographic representation. Chipata and Choma are both areas of high maize production, while Manza and Mongu are indicative of low production areas. Kabwe, Kitwe, and Lusaka are all urban areas where demand for these commodities is high. Solwezi is a new mining town with an increasing demand for food commodities.

Soure: the Central Statistics Office (CSO) in Zambia



5 Year Average 2015/16 - 2019/20      Previous Year 2019/20      Current Year 2020/21



5 Year Average 2015/16 - 2019/20      Previous Year 2019/20      Current Year 2020/21

