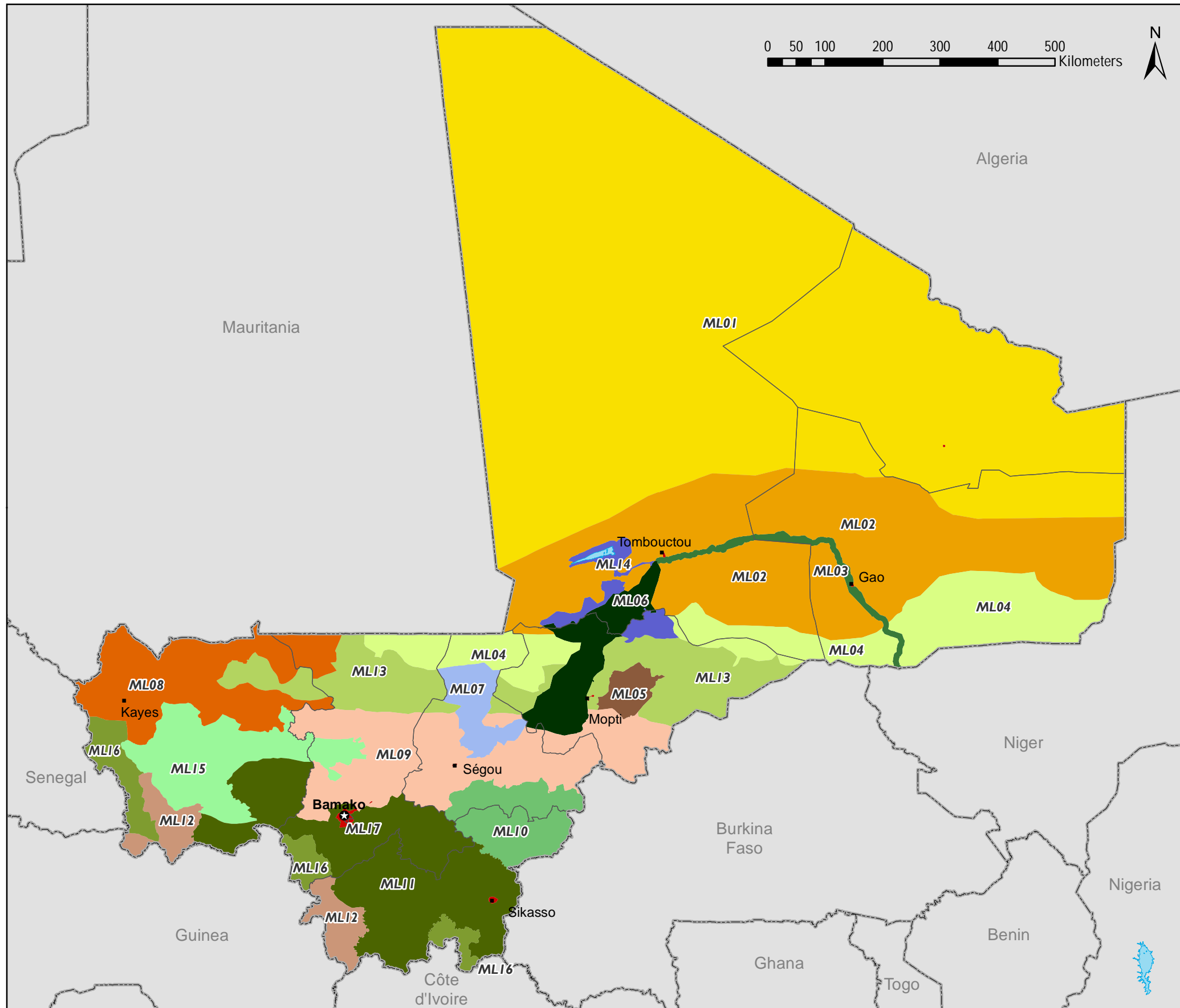


MALI - LIVELIHOOD ZONES



In collaborations with:



MALI CLUSTER SÉCURITÉ ALIMENTAIRE
Renforcer la réponse humanitaire



- ML01 - Nomadism and Trans-Saharan Trade
- ML02 - Northern Livestock
- ML03 - Niger Loop Rice and Fishing
- ML04 - Central Livestock, Millet, and Remittances
- ML05 - Dogon Plateau Millet and Shallots
- ML06 - Niger Delta Rice, Cattle, and Fishing
- ML07 - Office du Niger Rice and Market Gardening
- ML08 - Northwestern Sorghum, Remittances, and Livestock
- ML09 - Central Sorghum and Millet
- ML10 - Southeastern Sorghum, Millet, and Cotton
- ML11 - Southern Maize, Cotton, and Fruits
- ML12 - Southwestern Maize, Livestock, and Gold Mining
- ML13 - Center-eastern Millet and Livestock
- ML14 - Lakes Recessional Millet and Sorghum
- ML15 - Western Groundnut, Sorghum, and Maize
- ML16 - Southwestern Gold Mining and Maize
- ML17 - Urban

- International Boundaries
- + Capital
- Regions
- Cities

