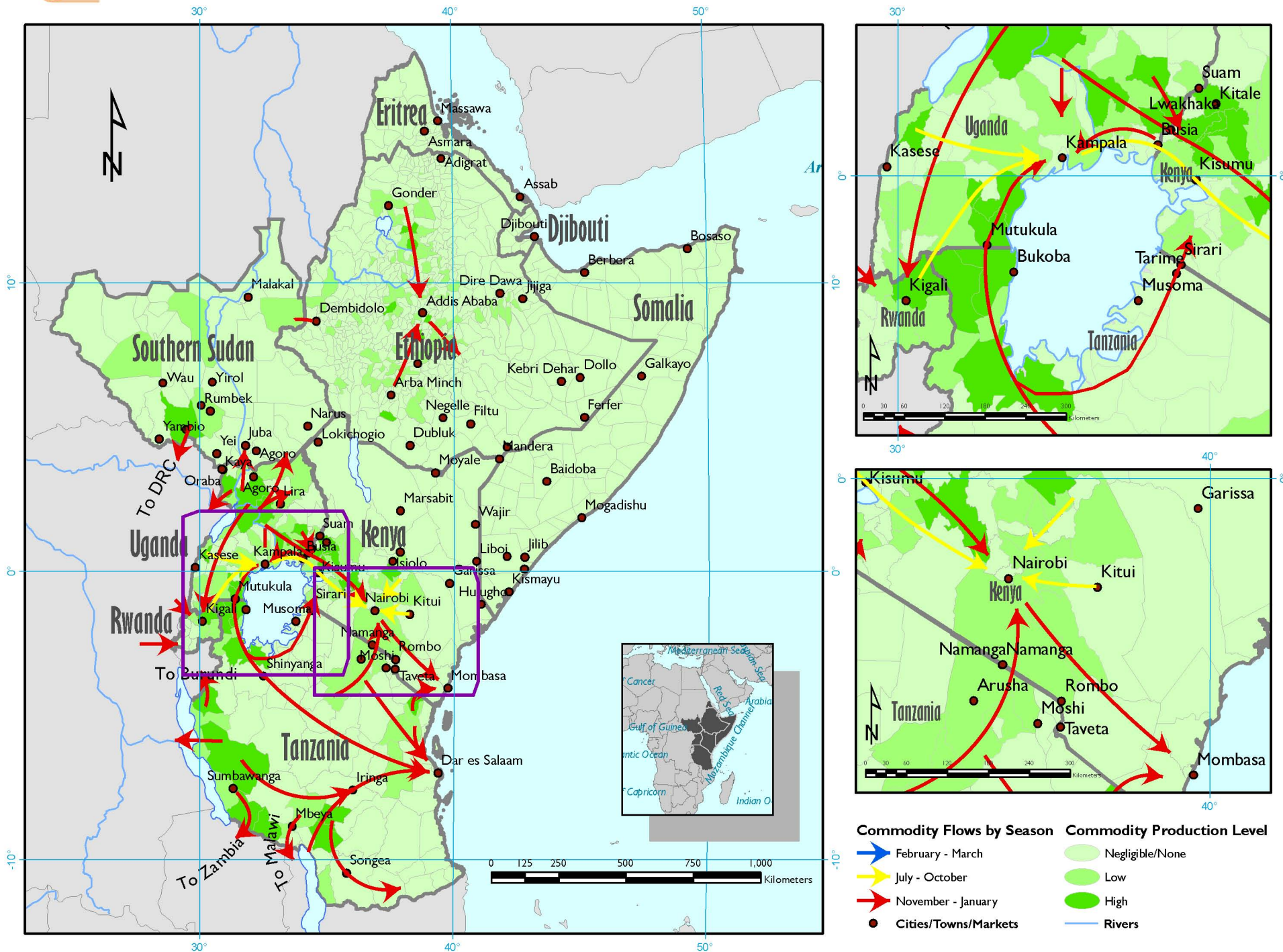


Bean Production and Market Flows in the GHA



Commodity Flows by Season

- Blue arrow: February - March
- Yellow arrow: July - October
- Red arrow: November - January
- Black dot: Cities/Towns/Markets

Commodity Production Level

- Light green circle: Negligible/None
- Medium green circle: Low
- Dark green circle: High
- Blue line: Rivers