

Mostly normal start of season with average to above average and well distributed rainfall

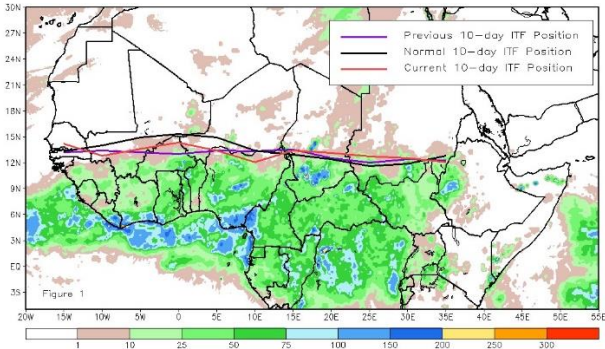
KEY MESSAGES

- The ITF (Intertropical Front) continued its northward migration; it was located slightly north of its climatological position in Chad and Senegal but at 1-2 degrees of latitude south of it in the rest of the region in late May (Figure 1).
- Rainfall has been average to above average over most of the area south of the ITF position (Figure 2).
- Globally, the season has started 1-2 dekads earlier than average over the region (Figure 3).
- Agrometeorological conditions have generally been favorable since early April for normal development of planted crops in the bi-modal zone and in the Sudanian-Guinean zones except for its extreme western part.

UPDATE ON SEASONAL PROGRESS

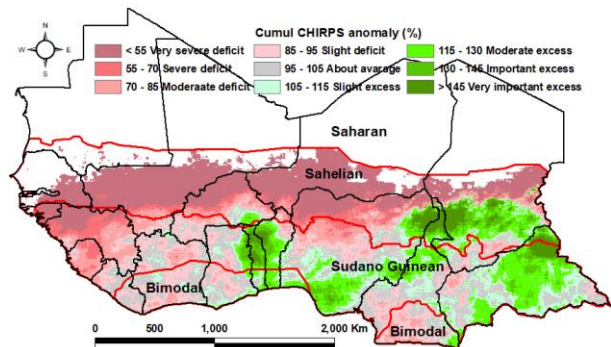
- The ITF's (Intertropical Front) northward migration started in early March and is now positioned between 12.1 and 14.3 degrees of latitude, as of mid-May. It was located (1-2 degrees) south of its climatological position from the western border of Mali to the western border of Chad (Figure 1). The ITF lag with respect to its normal position in this area has been consistently observed during the last 3 dekads. However, based on SST (Sea Surface Temperature) [forecast](#), colder SSTs are expected to persist over the Gulf of Guinea. This cooling is known to be the main driver of the ITF's northward migration, which is expected to continue to be at least normal.
- Analysis of rainfall from the first pentad of April to the fourth pentad of May indicates:
 - average to above average (Figure 2) and well distributed in time rainfall over most of the bimodal zone and over the Sudanian-Guinean zone, with the exception of its extreme western part, where the season has yet to start.
 - severe rainfall deficits over areas north of the ITF position in both the extreme western part of the Sudanian-Guinean zone and the Sahelian zone, where the season has yet to start (Figure 3).
- Rainfall and [soil moisture](#) analysis generally indicate that agrometeorological conditions have been adequate and

Figure 1. Current vs Normal Dekadal ITF Position and RFE Accumulation Precipitation (mm) – May 2022, Dekad 2



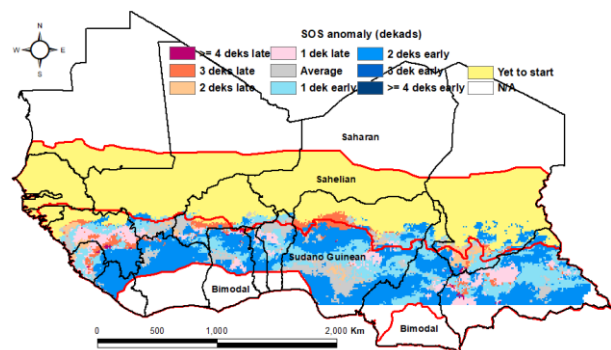
Source: USGS/FEWS NET

Figure 2. CHIRPS 10-Pentad Percent of (1981-2010) Average Rainfall – Period: 1 April – 20 May 2022



Source: USGS/FEWS NET

Figure 3. SOS Anomaly (Current season vs 1981-2010 median)



Source: USGS/FEWS NET

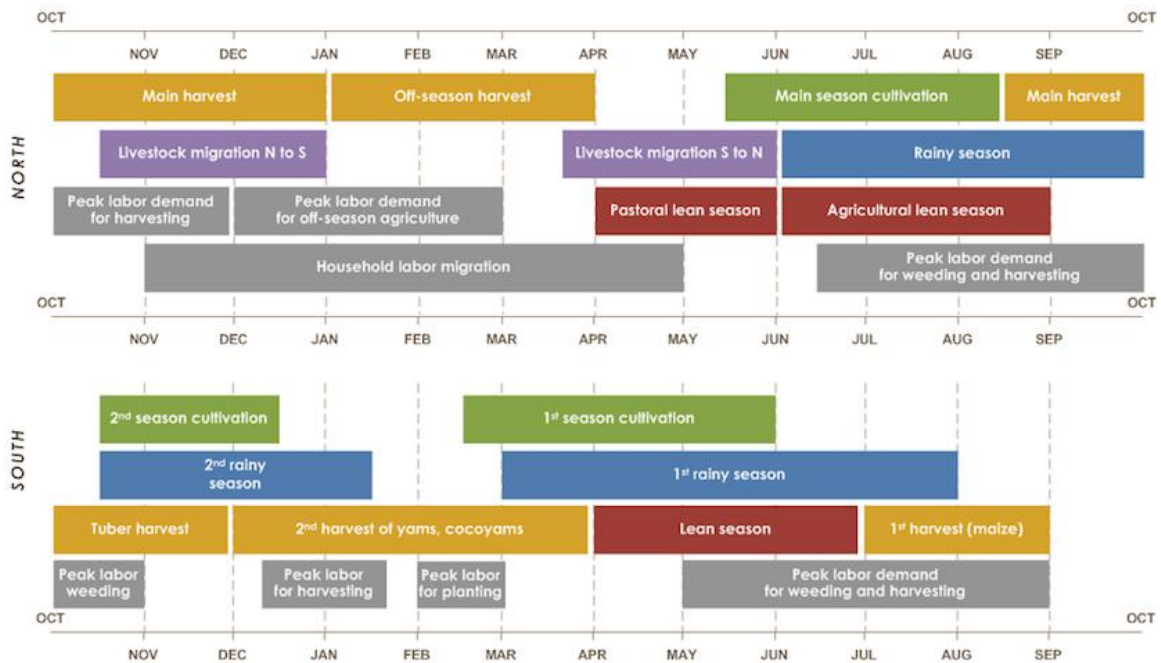
favorable for the development of planted crops over the bimodal and Sudanian-Guinean zones as well as the southern part of the Sahelian zone where the season has just started.

- According to the short and medium term forecasts from NOAA/CPC, rainfall is expected to continue expanding northward normally and no significant dry spell is expected within the next two weeks. The ITF is expected to make significant progress in its northward migration in the coming weeks.

FORECASTS

- The seasonal forecast from NOAA-NCEP for the next three-month periods (June-August, July-September and August-October) calls for average to above average rainfall over all the Sahelian zone and below average rainfall over portions of the Gulf of Guinea countries (eastern Guinea, western Liberia, Sierra Leone, southeastern Cote d’Ivoire, southern parts of Ghana, Togo and Benin, western and southern Nigeria and southern Cameroon) for all three periods (June-August, July-September, August-October).

SEASONAL CALENDAR IN A TYPICAL YEAR



Source: FEWS NET