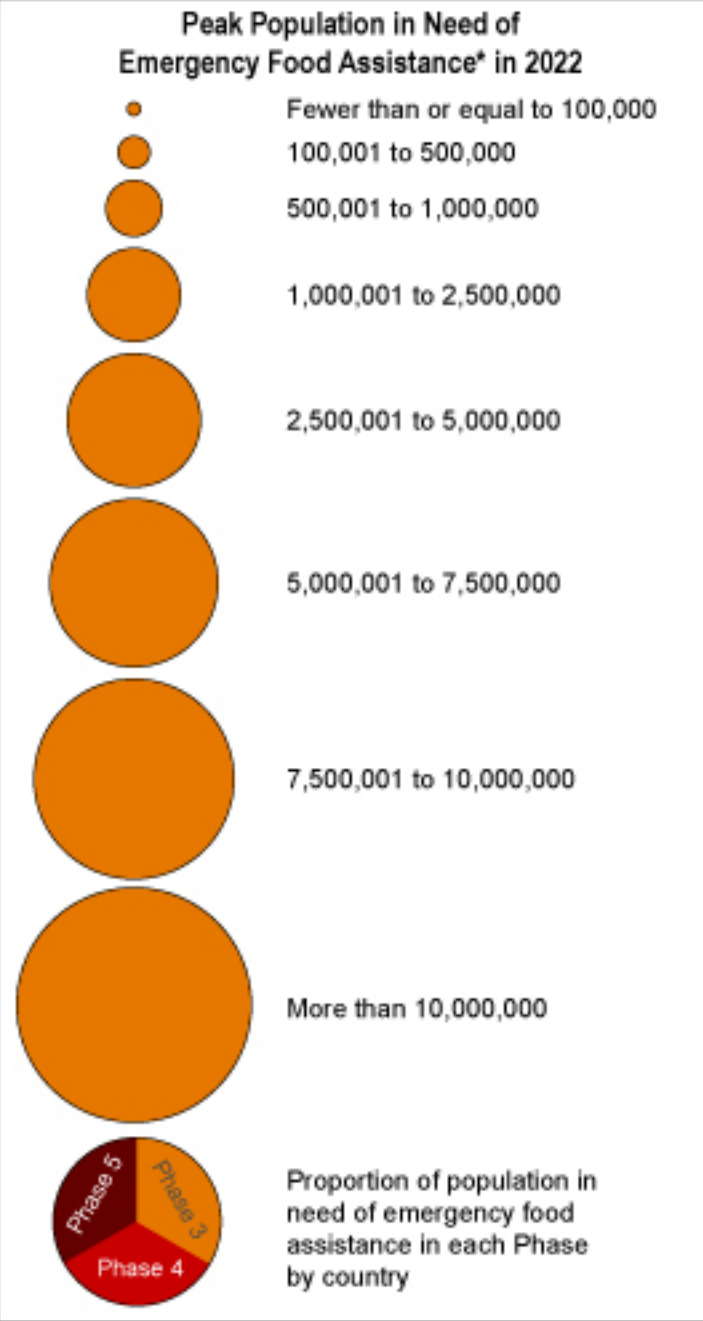
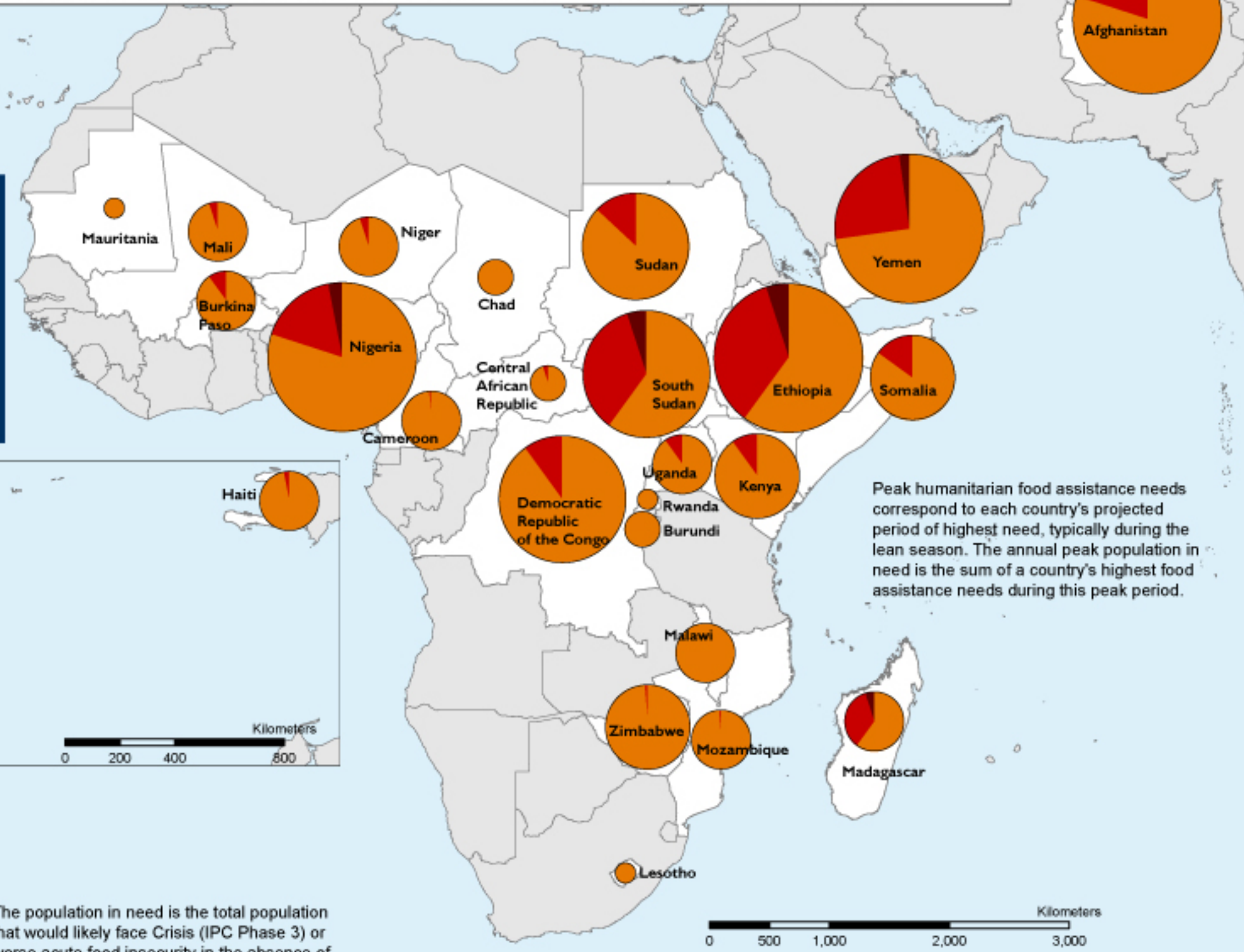


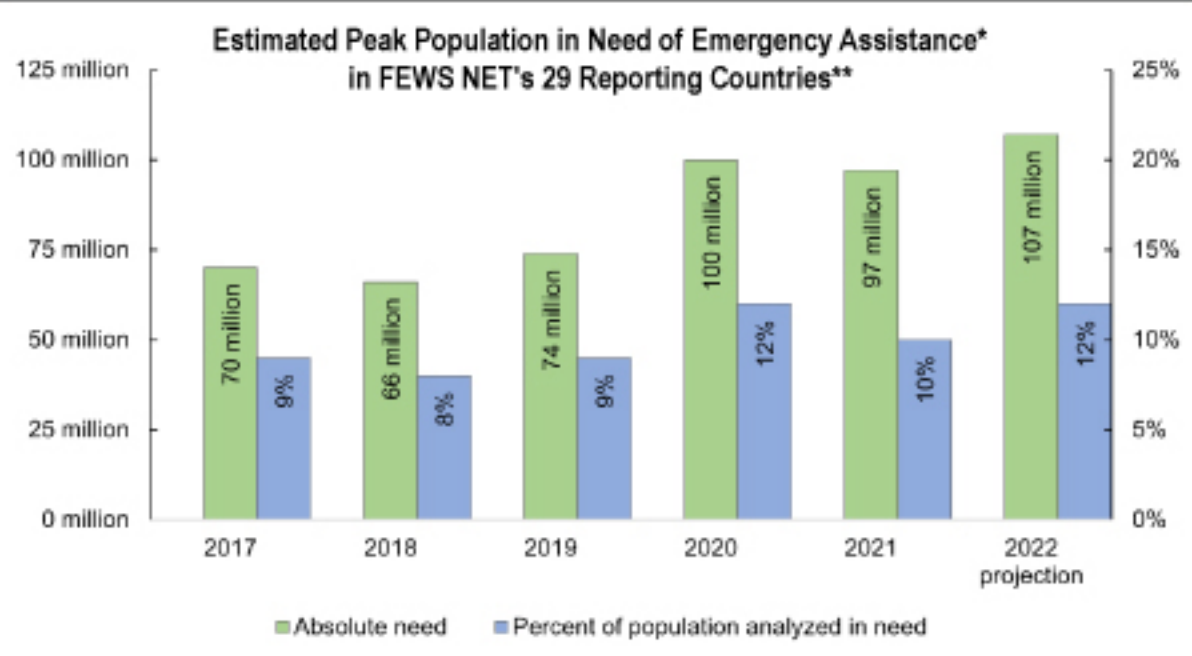
KEY CRISES LEAD TO INCREASED 2022 NEEDS IN SELECT COUNTRIES, OFFSETTING DECREASING OR STABLE NEEDS IN MOST COUNTRIES



Across the 29 FEWS NET reporting countries, an estimated **107 million people** will require humanitarian food assistance in 2022.



Peak humanitarian food assistance needs correspond to each country's projected period of highest need, typically during the lean season. The annual peak population in need is the sum of a country's highest food assistance needs during this peak period.



The population in need is the total population that would likely face Crisis (IPC Phase 3) or worse acute food insecurity in the absence of any emergency food assistance.

In previous infographics, FEWS NET provided a peak needs estimate across its reporting and some non-reporting countries. The chart to the left shows annual peak needs in FEWS NET's 29 current reporting countries.



* FEWS NET defines the population in need of emergency food assistance as those likely to face Crisis (IPC Phase 3) or worse acute food insecurity in the absence of emergency food assistance.
 ** The same 29 countries are in each year's aggregated total. The size of the base population analyzed changes each year according to national population growth.