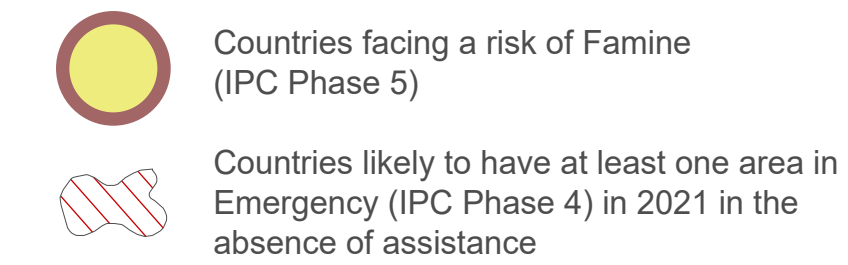
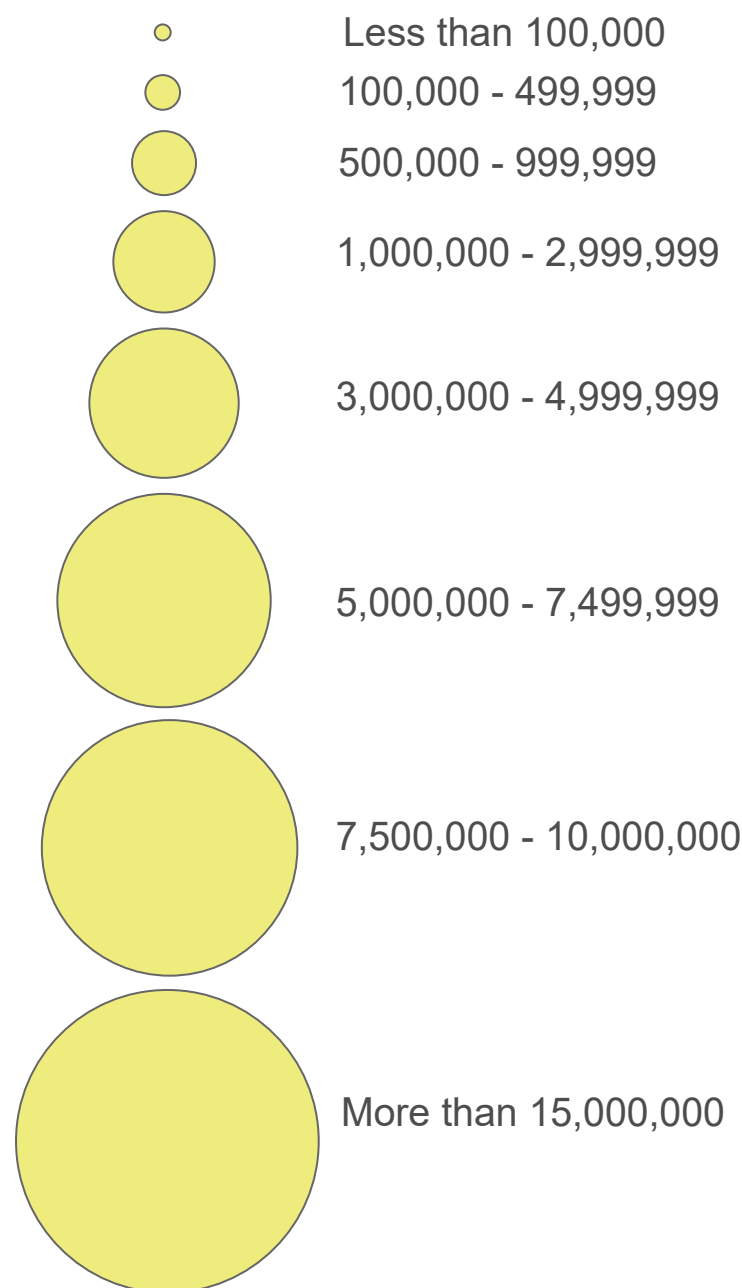
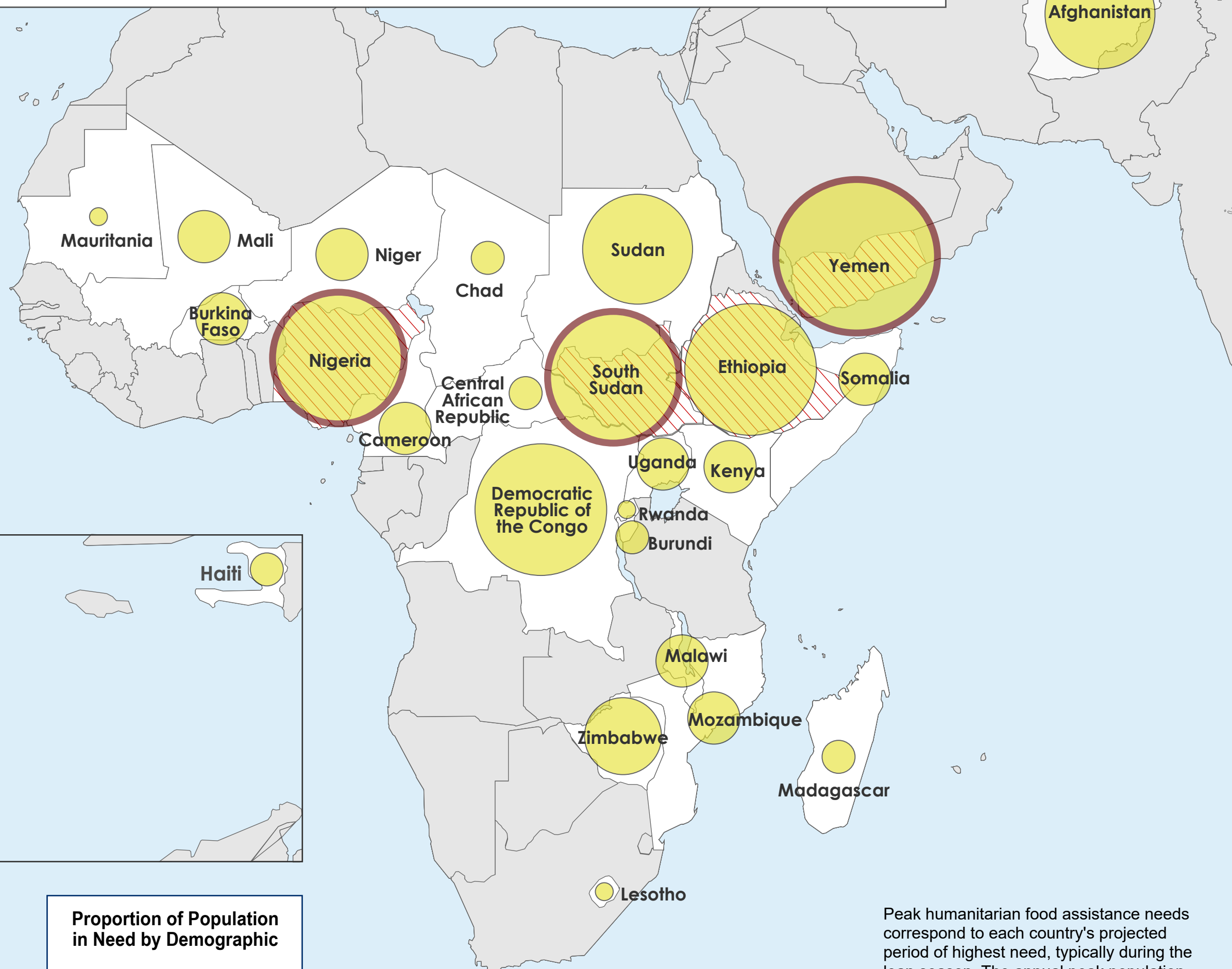
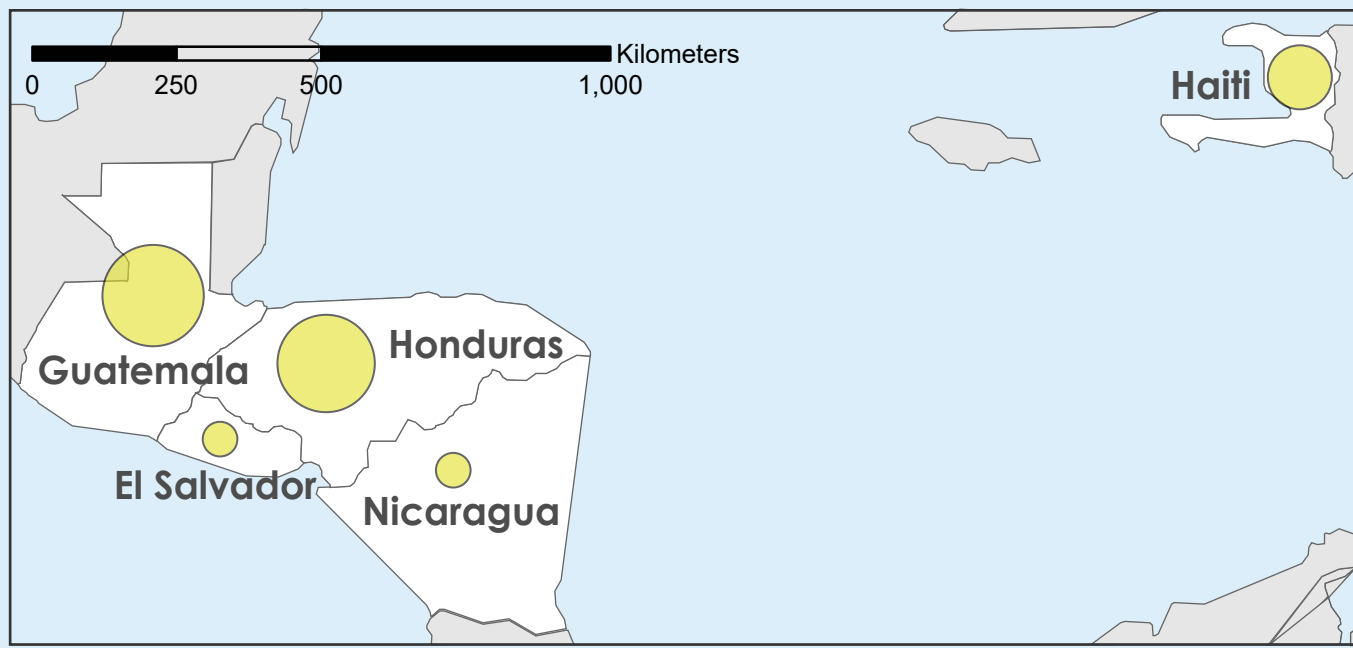


PROTRACTED CONFLICT WILL REMAIN THE PRIMARY DRIVER OF FAMINE RISK IN 2021

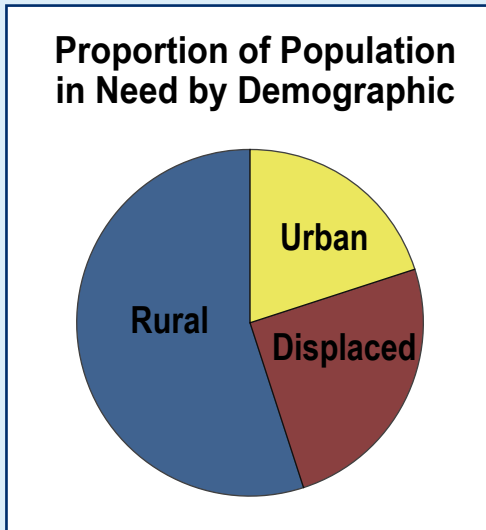
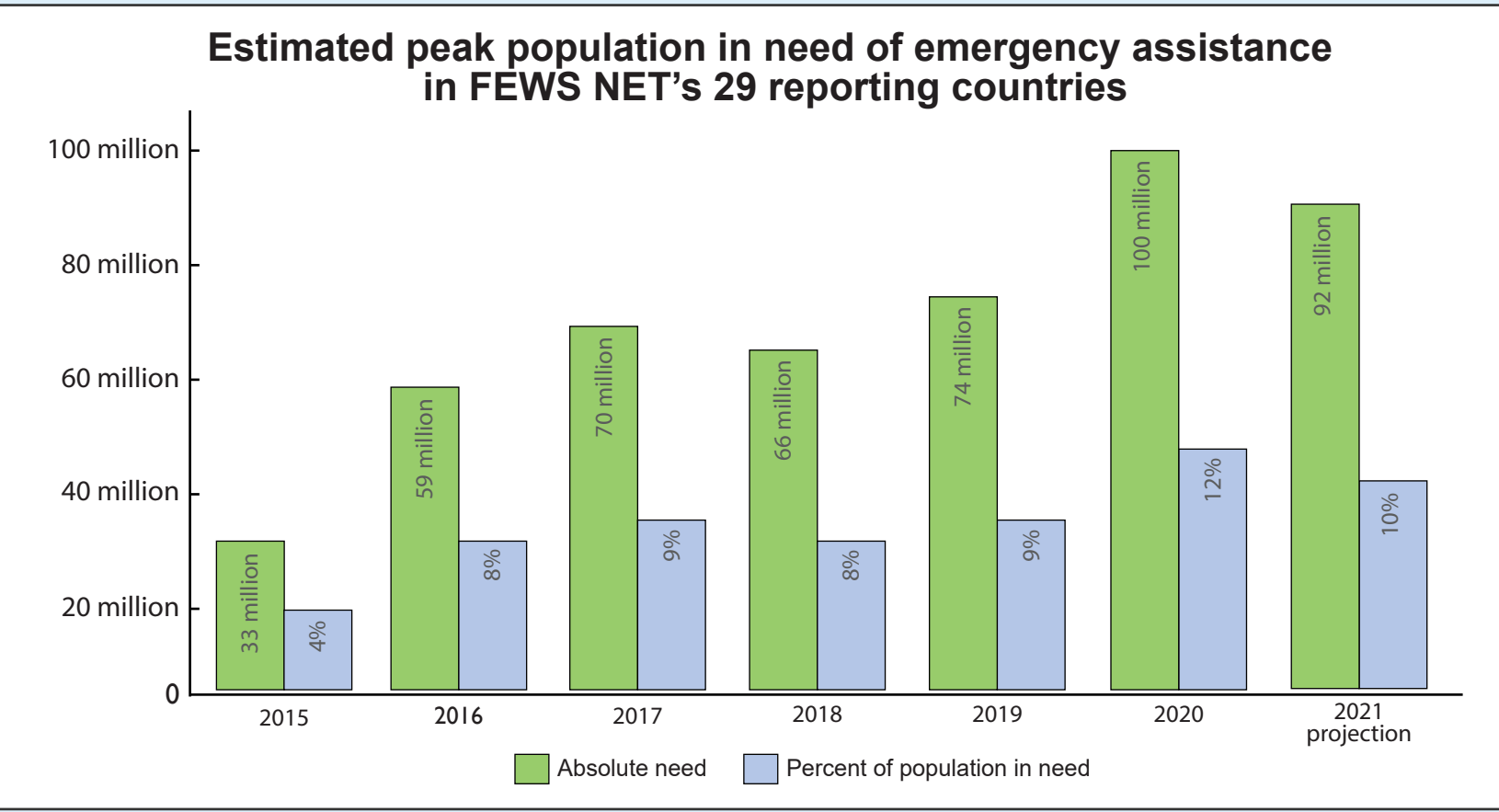
Peak Population in Need of Emergency Food Assistance in 2021*



Across the 29 FEWS NET reporting countries, an estimated **92 million people** will require humanitarian food assistance in 2021.



* FEWS NET defines the population in need of emergency food assistance as those likely to face Crisis (IPC Phase 3) or worse acute food insecurity in the absence of emergency food assistance.



Peak humanitarian food assistance needs correspond to each country's projected period of highest need, typically during the lean season. The annual peak population in need is the sum of a country's highest food assistance needs during this peak period.

The peak needs on this infographic were developed in January 2021 and reflects FEWS NET's analysis at that time. FEWS NET updates this analysis biannually, in October and January. Additional updates are produced as needed.

In previous infographics, FEWS NET provided a peak needs estimate across its reporting and some non-reporting countries. The chart to the left shows annual peak needs in FEWS NET's 29 current reporting countries.



FEWS NET is a USAID-funded activity. The content of this report does not necessarily reflect the views of the United States Agency for International Development or the United States government.