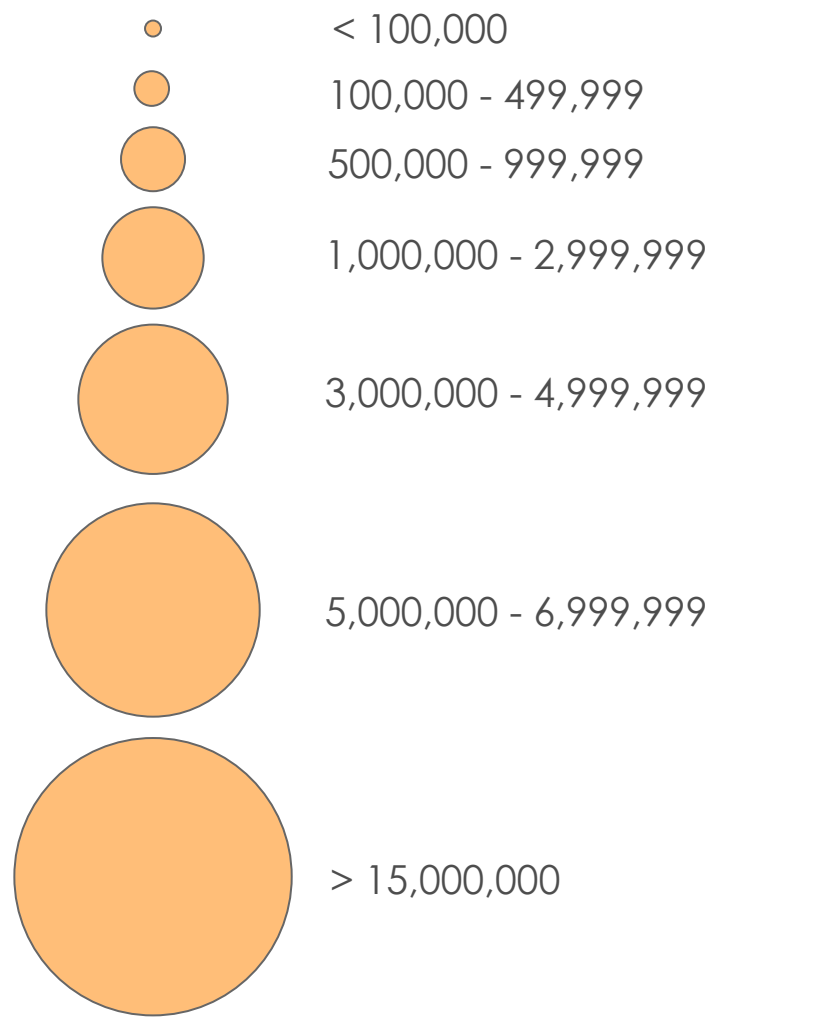


LARGE ASSISTANCE NEEDS AND FAMINE RISK CONTINUE IN 2018

Peak population in need of emergency food assistance in 2018*

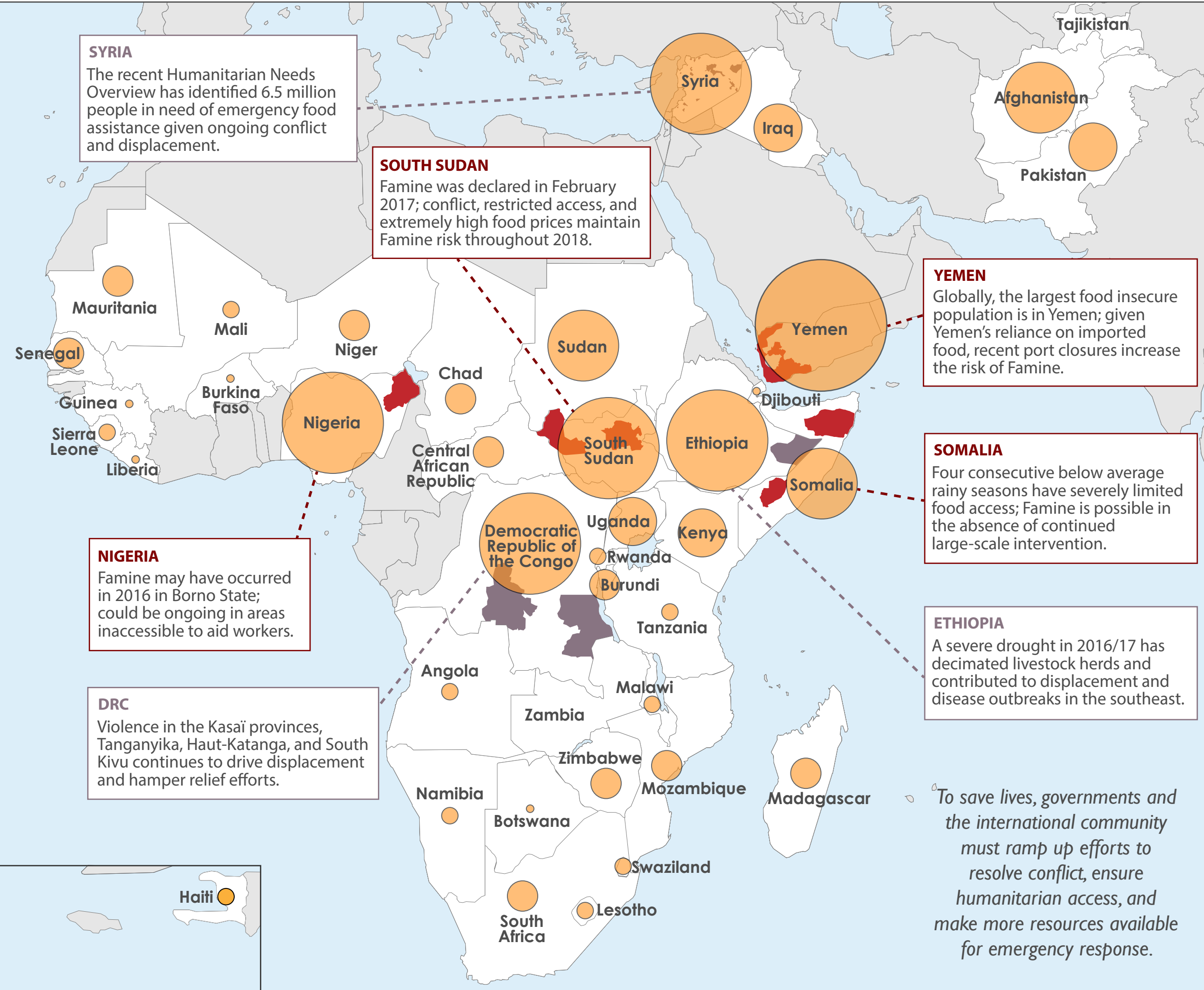


 Areas facing the highest risk of Famine in 2018, particularly in the absence of emergency food assistance

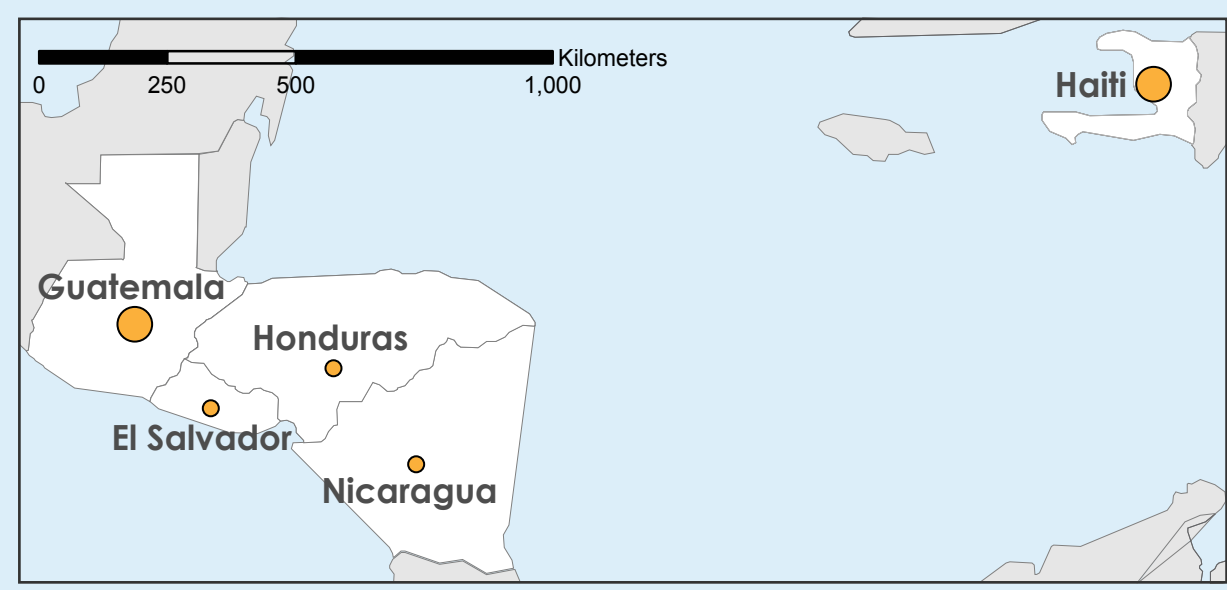
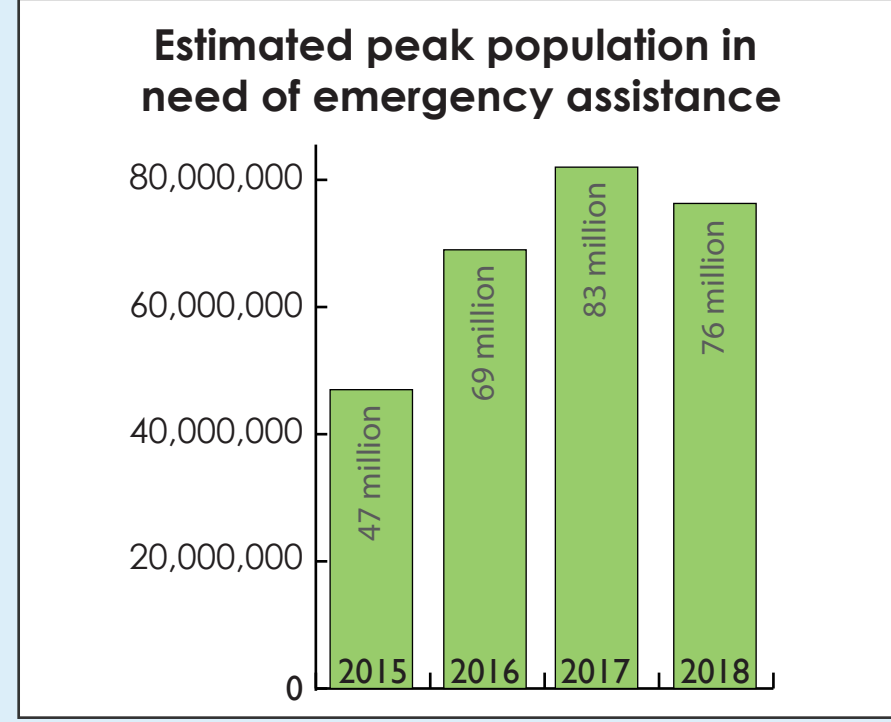
 Additional areas at risk of severe food insecurity

Famine threatens several countries

Across 45 countries, some **76 million** people will require emergency food assistance in 2018, **60% more** than in 2015.



*FEWS NET defines the population in need of emergency food assistance as those likely to face Crisis (IPC phase 3) or worse acute food insecurity in the absence of emergency food assistance.



To save lives, governments and the international community must ramp up efforts to resolve conflict, ensure humanitarian access, and make more resources available for emergency response.

Estimates are for January - December 2018.
Detailed reports at: www.fews.net



FEWS NET is a USAID-funded activity. The content of this report does not necessarily reflect the view of the United States Agency for International Development or the United States Government.